



# ORGANISATIONAL CHART



Margaret Coleman & Janet Shepard Stone  
Joint CEOs



Susanne Spivey  
Finance Director



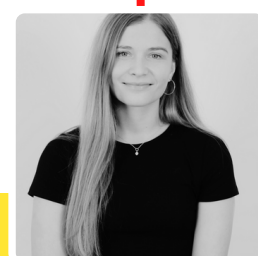
Daniel Norton  
Vice President



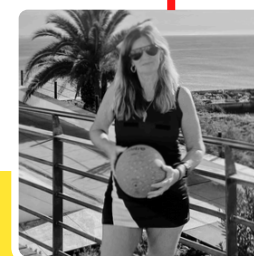
Sheba Karamat  
President



Holly Sampson  
Secretary



Chelsea Gray  
Director



Ruth Allen  
Director



Gaylene Schmulian  
Coaching Director



Caroline Migo  
Umpiring Director